

# Lily 6

WILDFLOWER SERIES



Traditional Farmhouse Elevation (A)  
1236 SQ.FT.



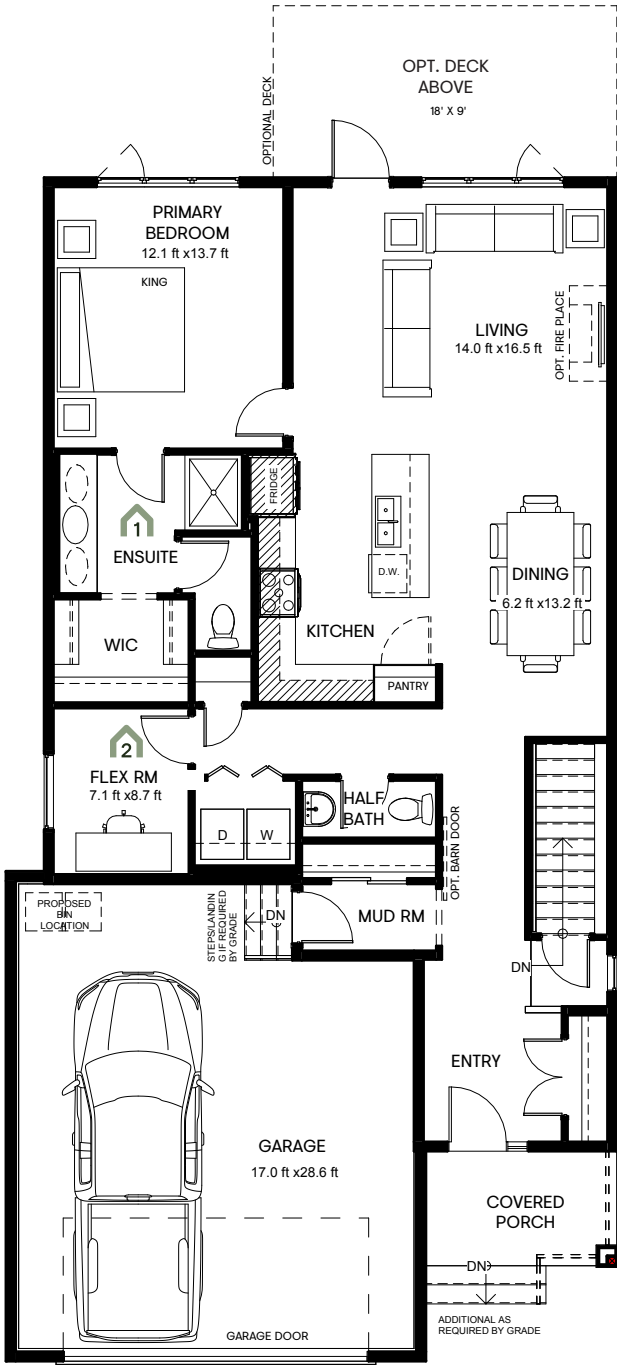
Rustic Farmhouse Elevation (B)  
1236 SQ.FT.



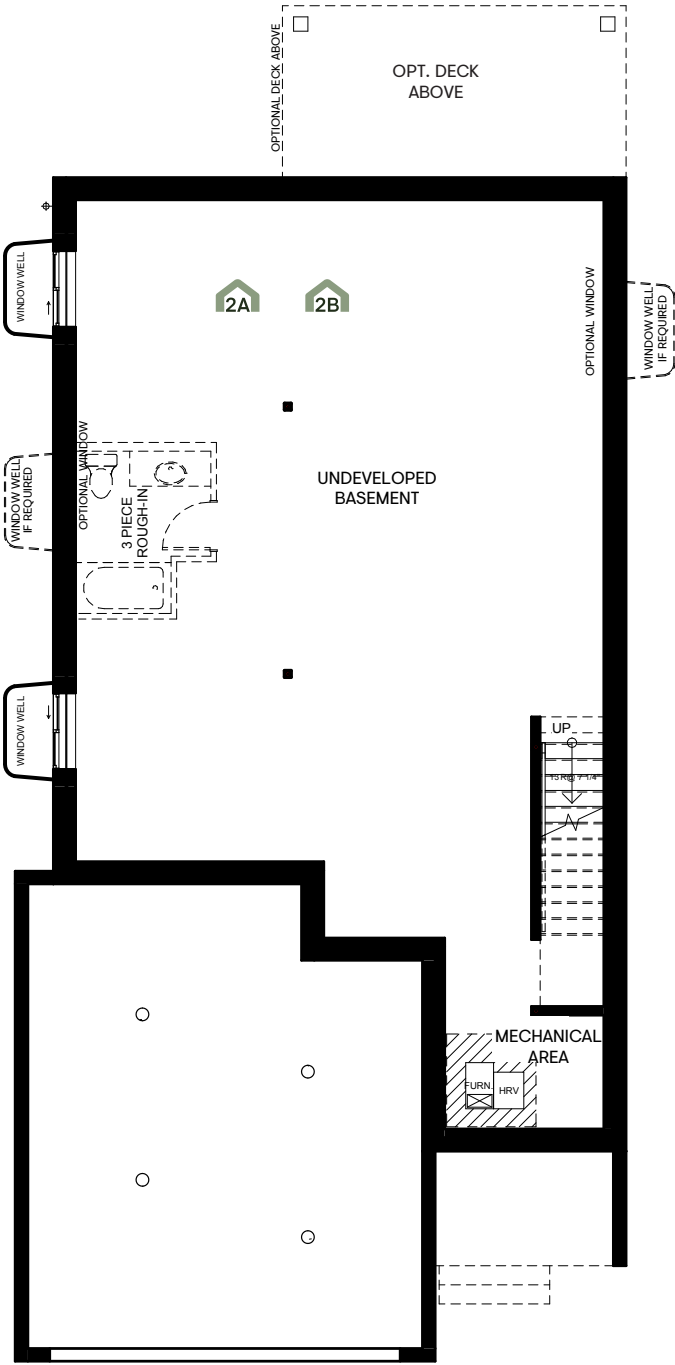
# Lily 6

# WILDFLOWER SERIES

1236 SQ.FT. | 1 Bedroom + Flex Room | 1.5 Baths | Double Car Garage

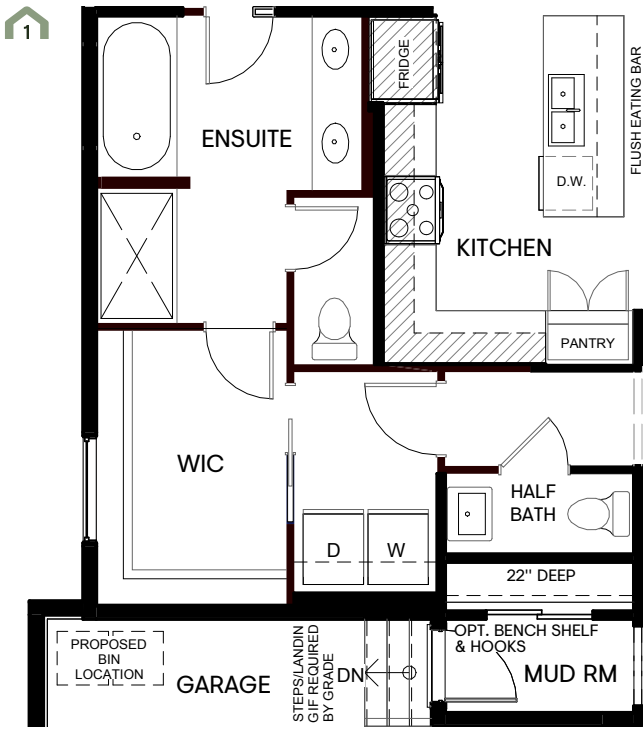


Main floor  
1247 sq.ft.

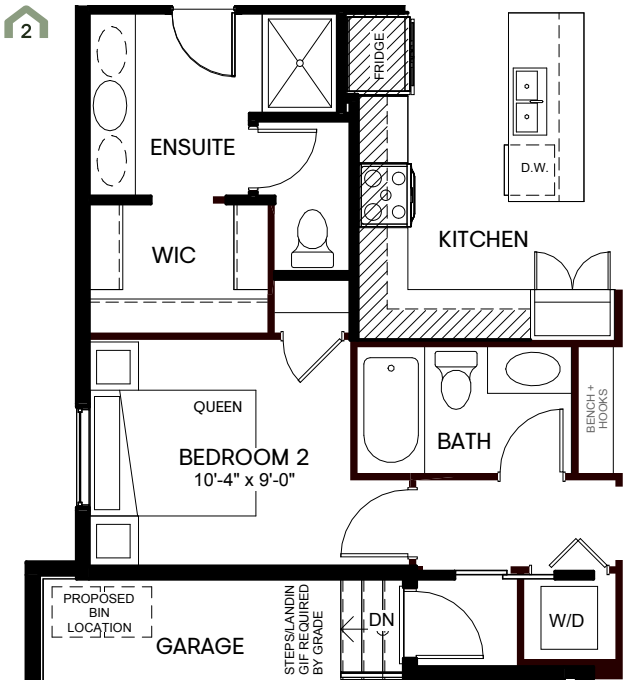


Basement  
(undeveloped)

## FLEX OPTIONS



Ensuite upgrade in lieu of flex room  
1247 sq.ft.



Alternate main floor w/ 2 bedrooms & 2 bathrooms  
1247 sq.ft.

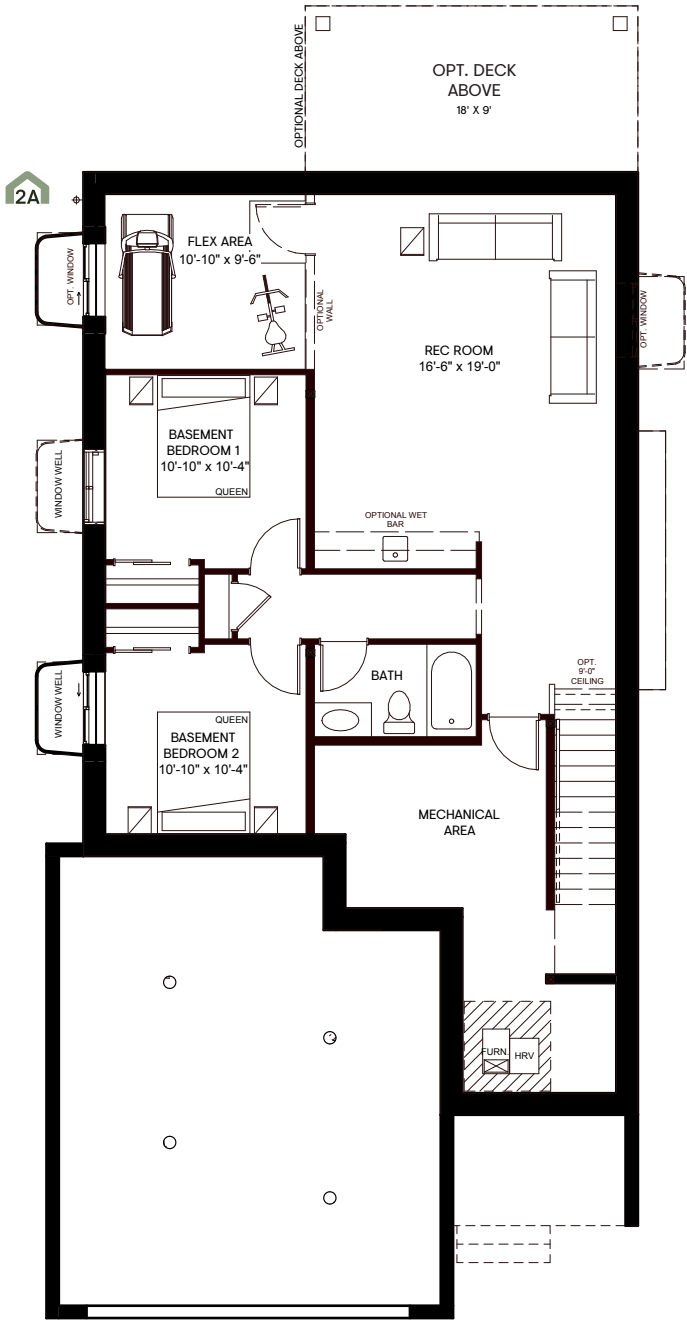
The Developer reserves the right to make revisions if deemed appropriate in its sole discretion to all plans, dimensions, and specifications provided, including but not limited to window location and size. Actual usable floor space may vary from the stated floor area. The purchase price does not include any vehicles, accessories, or equipment shown. Renderings are artist's concepts only. Marketing floorplans reflect Traditional Farmhouse Elevation A (36SF3206) unless otherwise stated. This drawing contains information which is proprietary to and is the property of the Developer and may not be used, reproduced, or disclosed in any manner other than in relation to the purchase of a home within this project without the permission of the Developer. Pricing subject to change without notice. E. & O. E. Revised September 2023.

# Lily 6

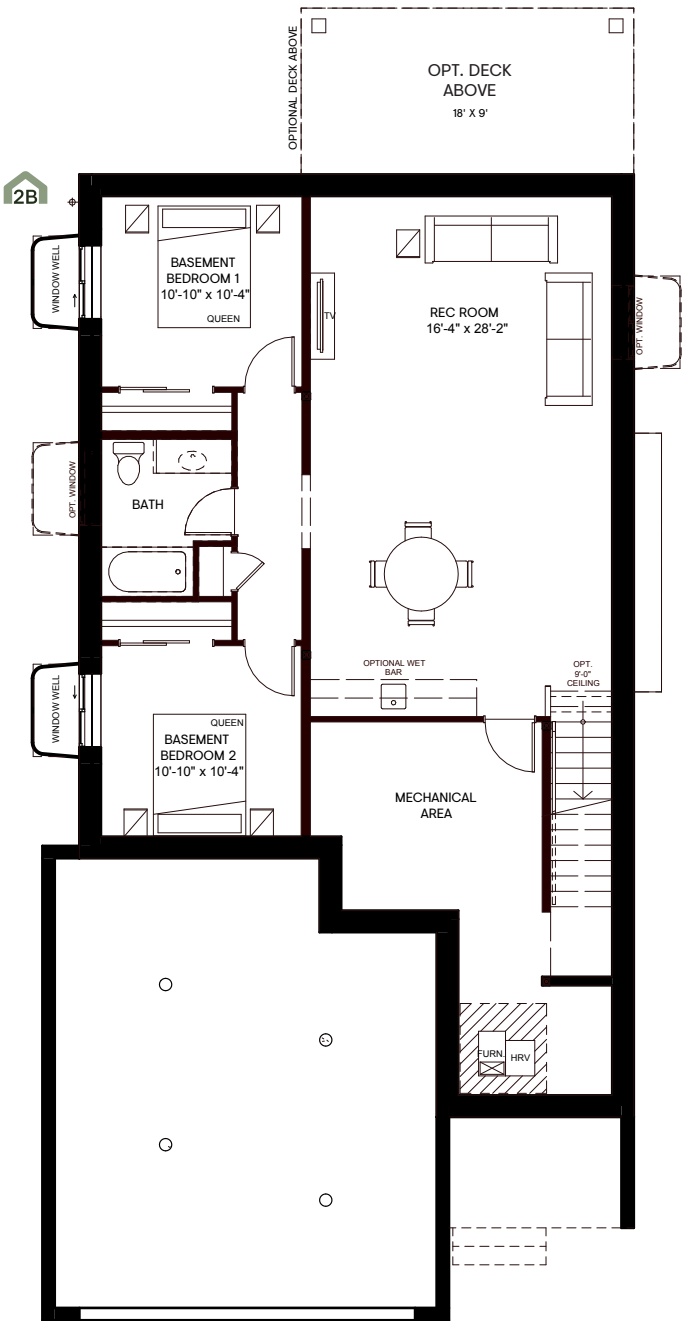
# WILDFLOWER SERIES

1236 SQ.FT. | 1 Bedroom + Flex Room | 1.5 Baths | Double Car Garage

## FLEX OPTIONS CONTINUED



Basement development w/ 2 bedrooms  
916 sq.ft.



Basement development w/ 2 bedrooms & flex area  
916 sq.ft.

The Developer reserves the right to make revisions if deemed appropriate in its sole discretion to all plans, dimensions, and specifications provided, including but not limited to window location and size. Actual usable floor space may vary from the stated floor area. The purchase price does not include any vehicles, accessories, or equipment shown. Renderings are artist's concepts only. Marketing floorplans reflect Traditional Farmhouse Elevation A (38SF3206) unless otherwise stated. This drawing contains information which is proprietary to and is the property of the Developer and may not be used, reproduced, or disclosed in any manner other than in relation to the purchase of a home within this project without the permission of the Developer. Pricing subject to change without notice. E. & O. E. Revised September 2023.